



AIKYATHA DEVELOPERS

REDEFINING LUXURY FOR ALL

THE apHEARTment



Why THE apHEARTment



Unveiling The apHEARTment: Your Nizampet Hilltop Sanctuary Awaits!

Dear Valued Customer,

Prepare to be captivated! Aikyatha Developers proudly unveils The apHEARTment, a visionary residential haven perched atop a majestic Nizampet hill.

Unparalleled Vistas, Unrivalled Luxury:

- Embrace breathtaking 360° views: Imagine Hyderabad sprawling beneath you, a breathtaking panorama visible from every apartment. Witness sunrise paint the city gold and sunsets bathe it in a fiery glow. You'll truly feel like royalty surveying your domain.
- Unwind in a serene, hilltop sanctuary: Escape the city's bustle and bask in the tranquility of nature. The apHEARTment offers a sense of seclusion unmatched in Nizampet.
- Luxury redefined: Indulge in a world of premium amenities designed to elevate your everyday living.

(swimming pool, gym, rooftop lounge, etc.)

The apHEARTment is more than an address; it's a statement.

Limited residences available!

Register now for exclusive launch offers and priority access.

Visit our website at www.aikyathadevelopers.in for a sneak peek.

Live life on top at The apHEARTment!



2 BHK

Starting from

5,55,555/-*

3 BHK

Starting from

6,66,666/-*

AMENITIES

- Club house
- Swimming pool
- Banquet hall
- Gymnasium
- Indoor games
- Co-working space
- Play area for kids
- Waiting lounge
- Guest Room
- 24*7 Security
- Saloon/spa
- Food court/coffee shop
- Out door sitting
- Dog Park



EASE OF ACCESSIBILITY

Schools

Vignan Schools	5 mins
SR digi	3 mins
Narayana	8 mins
Ravindra bharathi	5 mins

Hospitals

SLG hospital	8 mins
Sri Sri Holistic	8 mins
Landmark	10 mins

Prominent places

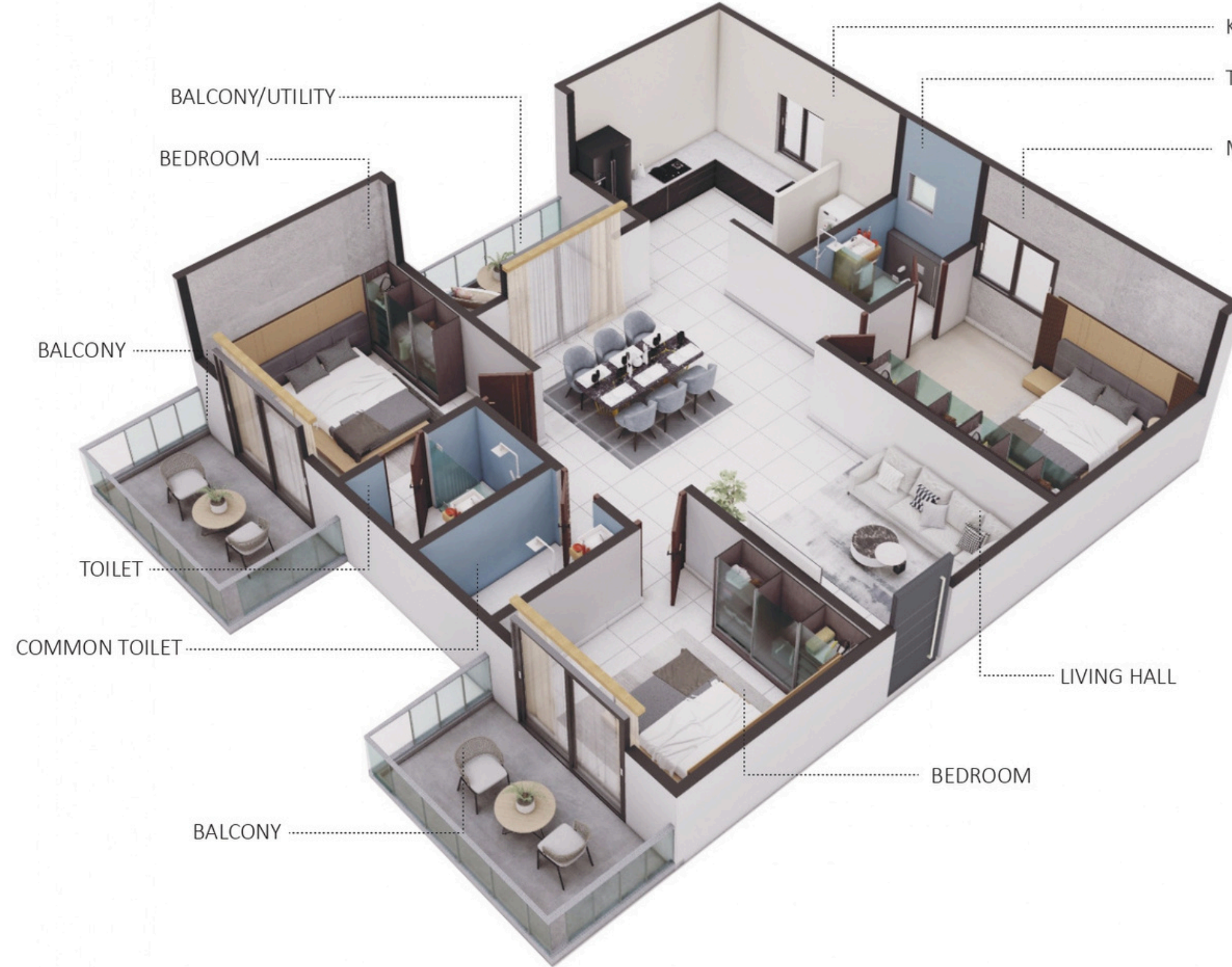
Nizaampet X roads	5 mins
Bachupally	5 Mins
JNTU college	10 mins

AREA STATEMENT

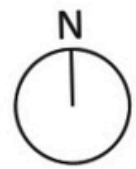
AREA STATEMENT				
Site Area	51,183.40		Sq.Ft.	
	4,755.05		Sq.Ft.	
	5,687.04		SQYRDS	
	1.18		Acres	
Building Height	B + S + G + 7+ 2TDR FLOORS			
	33 M (INCLUDING STILT)			
Setback Provided	All Sides		8M	
10% Tot-lot (in Sq.Yds)	Required		Provided (10.08 %)	
	5,118.34		5,159.05	
Club House (3%) (in Sq.Ft)	Required		Provided (3.05 %)	
	5,712.56		5,814.92	
TOTAL BUILTUP AREA (EXCLUDING PARKING)		1,90,418.80		SQFT
TOTAL SALEABLE AREA		2,09,345.00		SQFT
SBA/ YRDS		36.81		
BLOCK A (B+S+G+7+2TDR)				
FLAT NO.	GROUND	TYPICAL	TYPE	FACING
A1	1,570	1,905	3 BHK	West
A2	1,295	1,295	2 BHK	West
A3	1,570	1,930	3 BHK	West
A4	CLUBHOUSE	1,370	2 BHK	North
A5	CLUBHOUSE	1,370	2 BHK	North
A6	CLUBHOUSE	1,370	2 BHK	North
A7	1,580	1,950	3 BHK	East
A8	1,165	1,305	2 BHK	East
A9	1,165	1,305	2 BHK	East
A10	1,570	1,900	3 BHK	East
A11	1,570	1,775	3 BHK	West
A12	CLUBHOUSE	1,275	2 BHK	West
A13	CLUBHOUSE	1,285	2 BHK	East
A14	1,570	1,775	3 BHK	East
TOTAL	13,055	21,810	Sft.	
GRAND TOTAL (SBUA)	2,09,345.00			Sft.
NO. of UNITS	135			Units





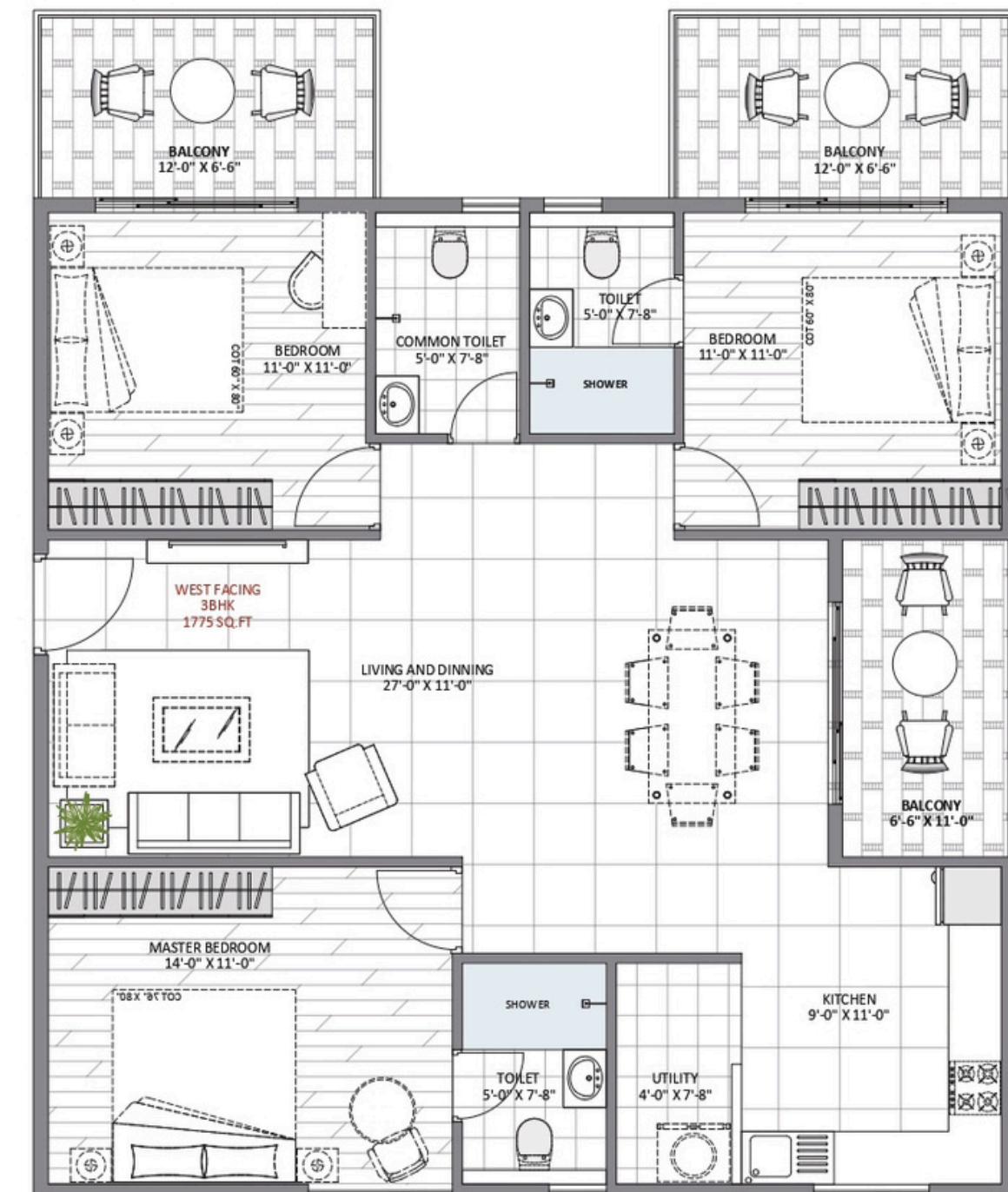


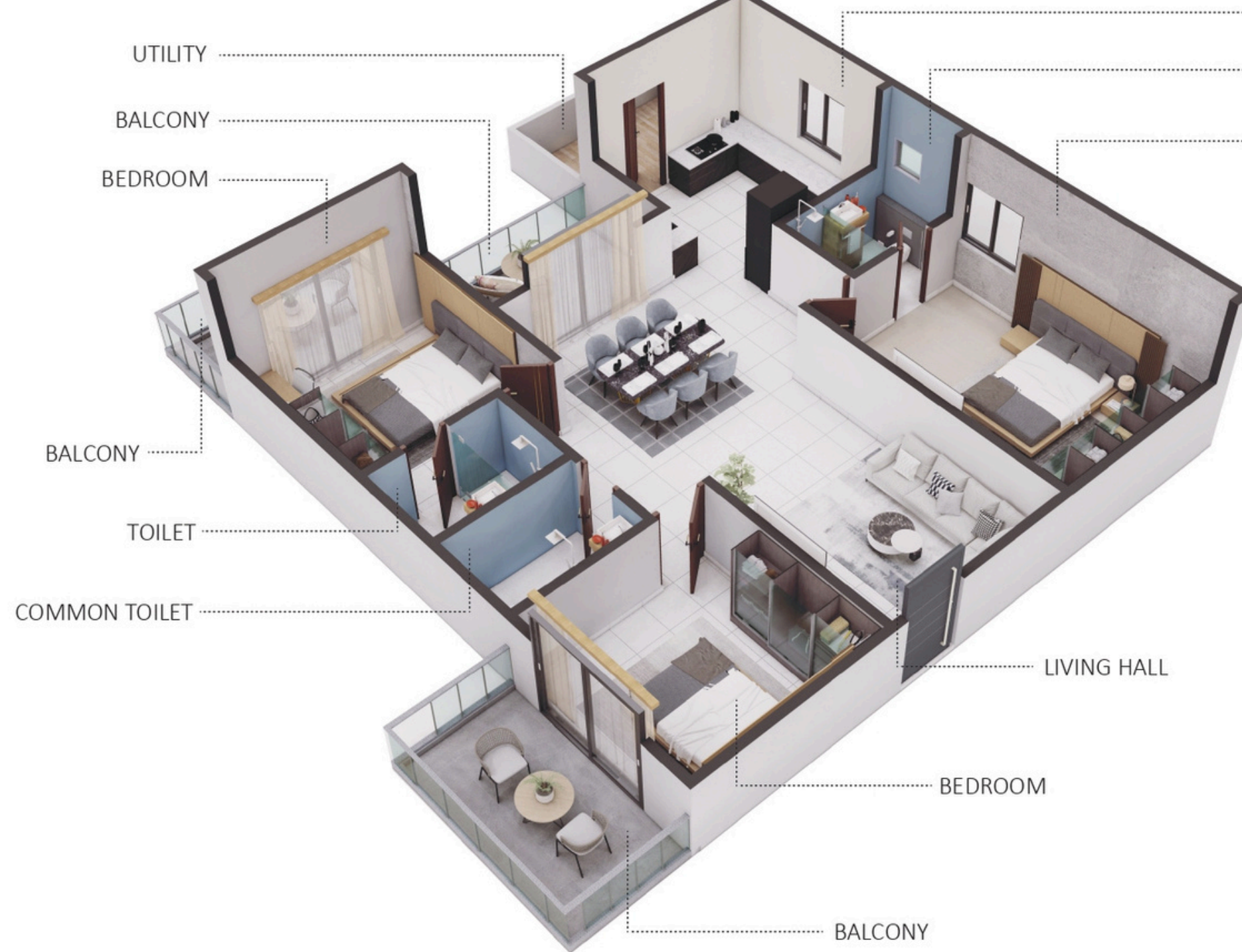
KEY PLAN



TYPE -8
WEST FACING (Typical Floor)

3 BHK
SA- 1775 SQ.FT



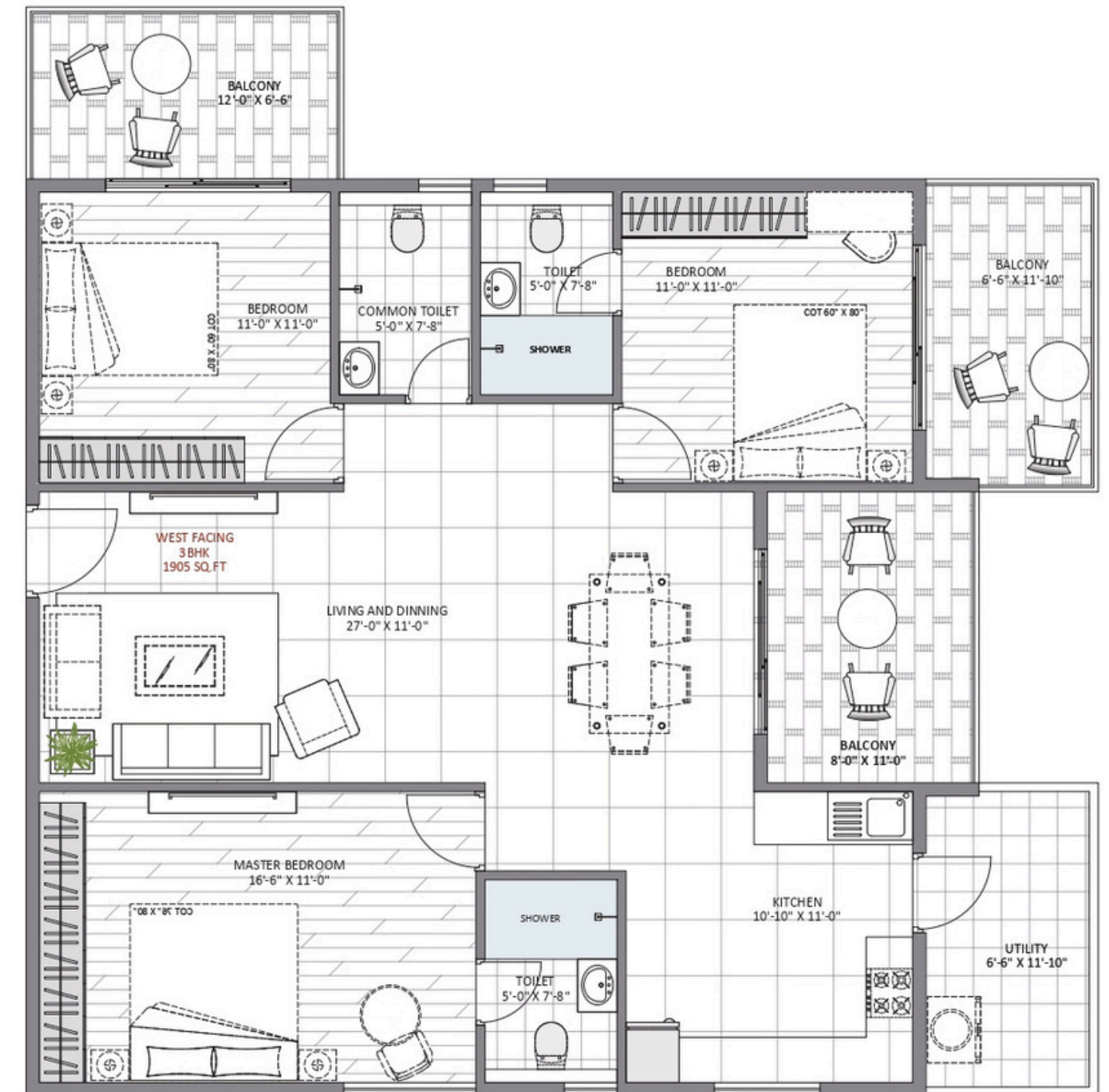


KITCHEN
TOILET
MASTER BEDROOM



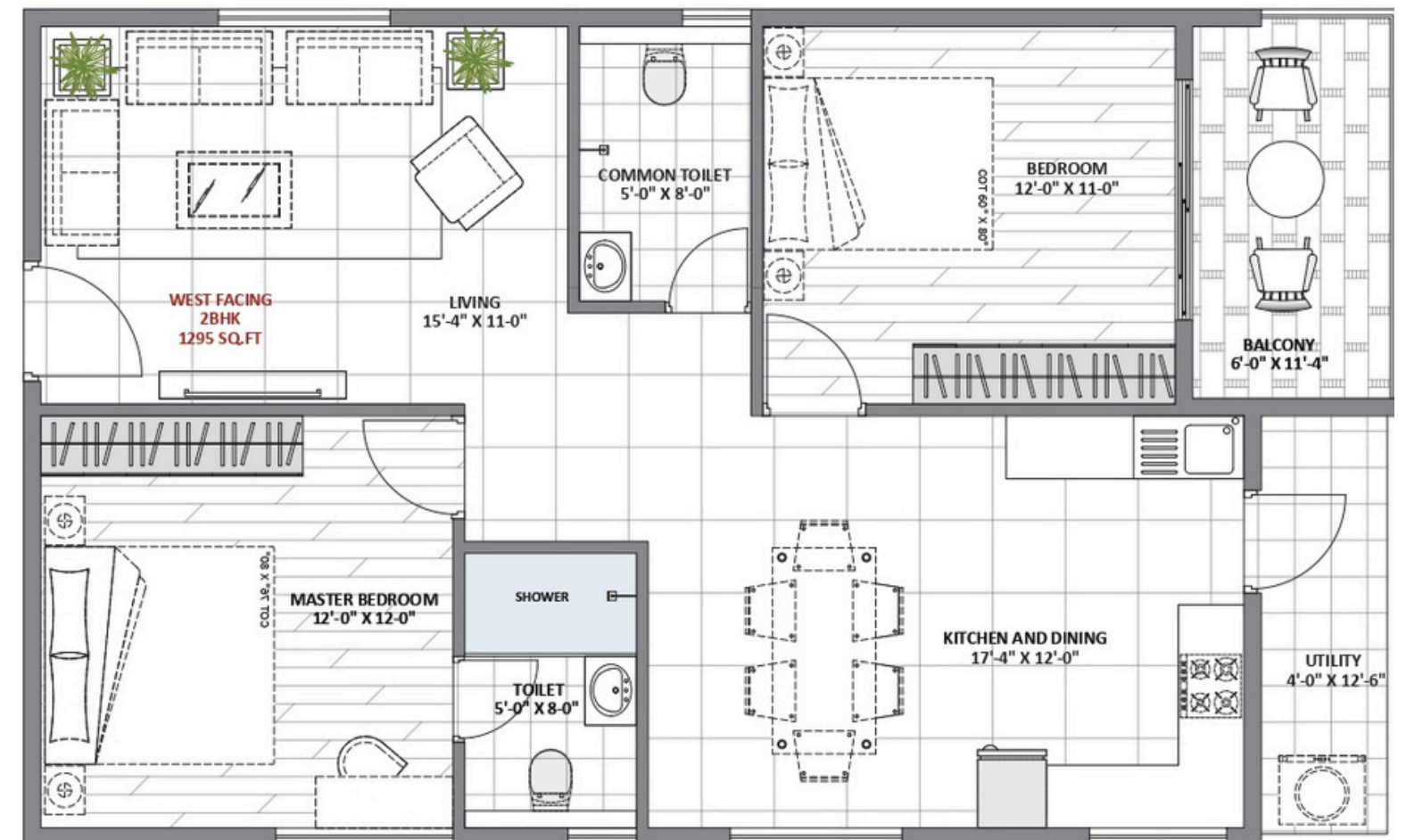
BALCONY
BEDROOM
TOILET
COMMON TOILET
LIVING HALL
BEDROOM
BALCONY

TYPE -1
WEST FACING (Typical Floor)
3 BHK
SA- 1905 SQ.FT

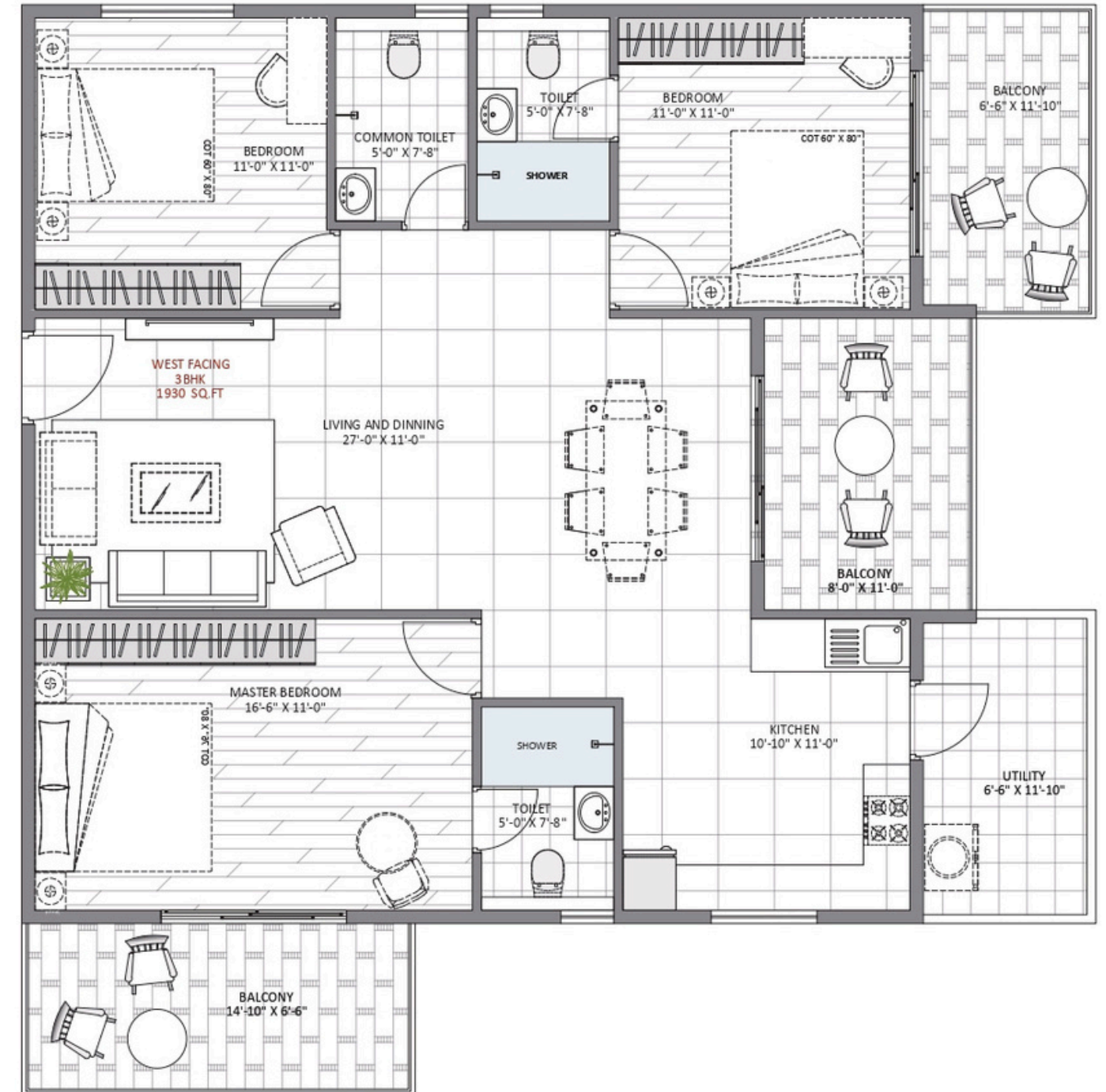
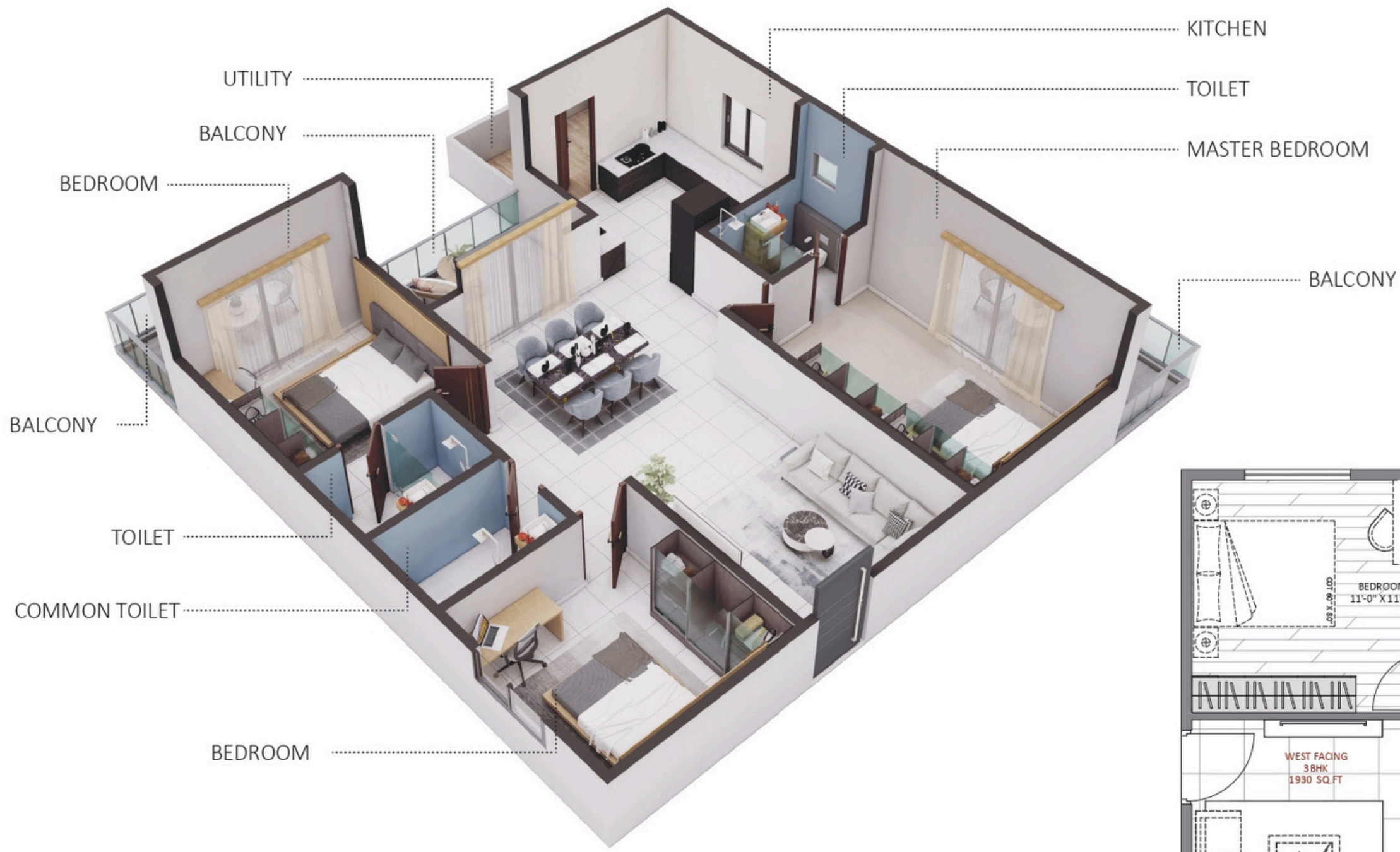




KEY PLAN

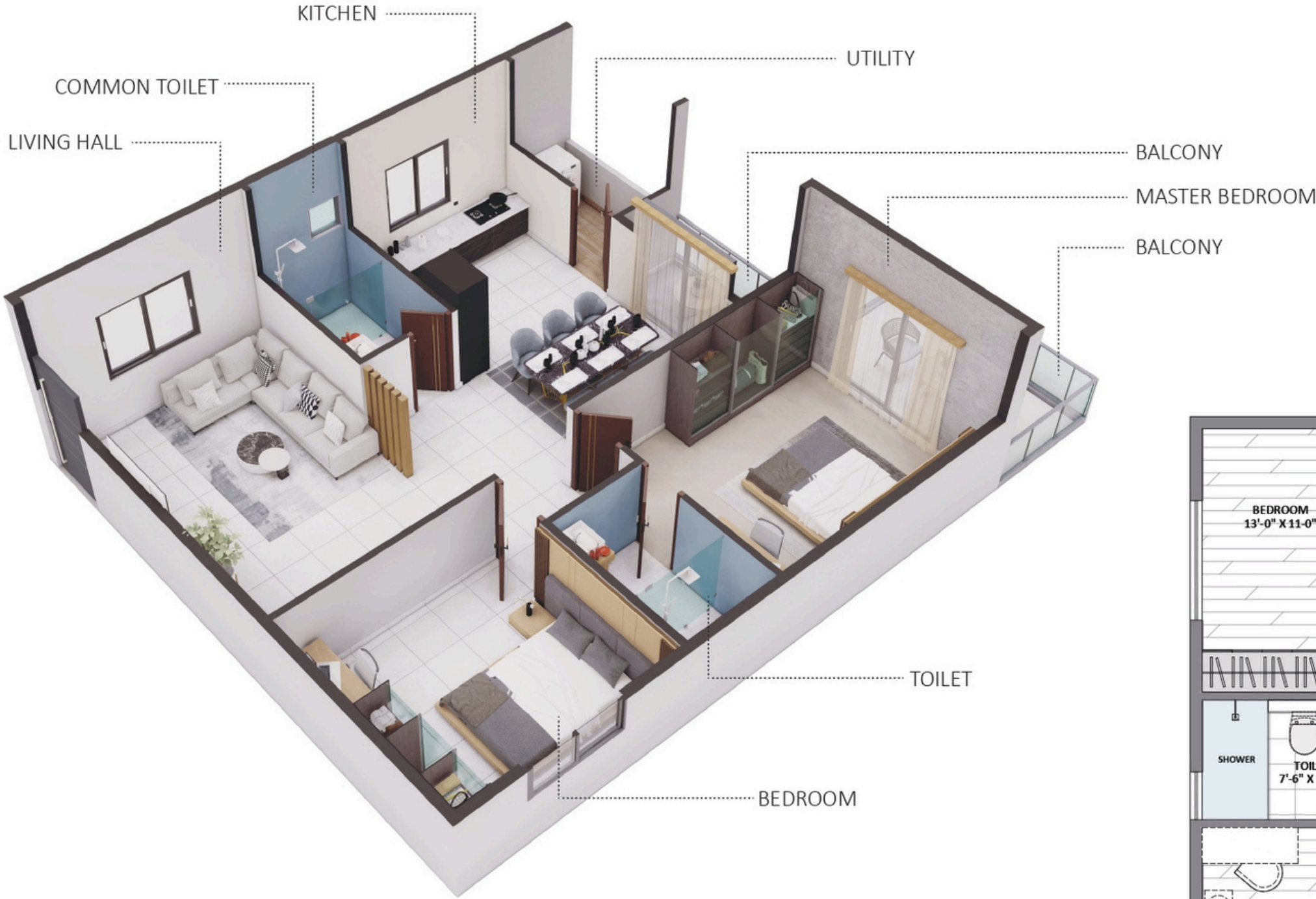


TYPE -2
WEST FACING (Typical Floor)
2 BHK
SA- 1295 SQ.FT

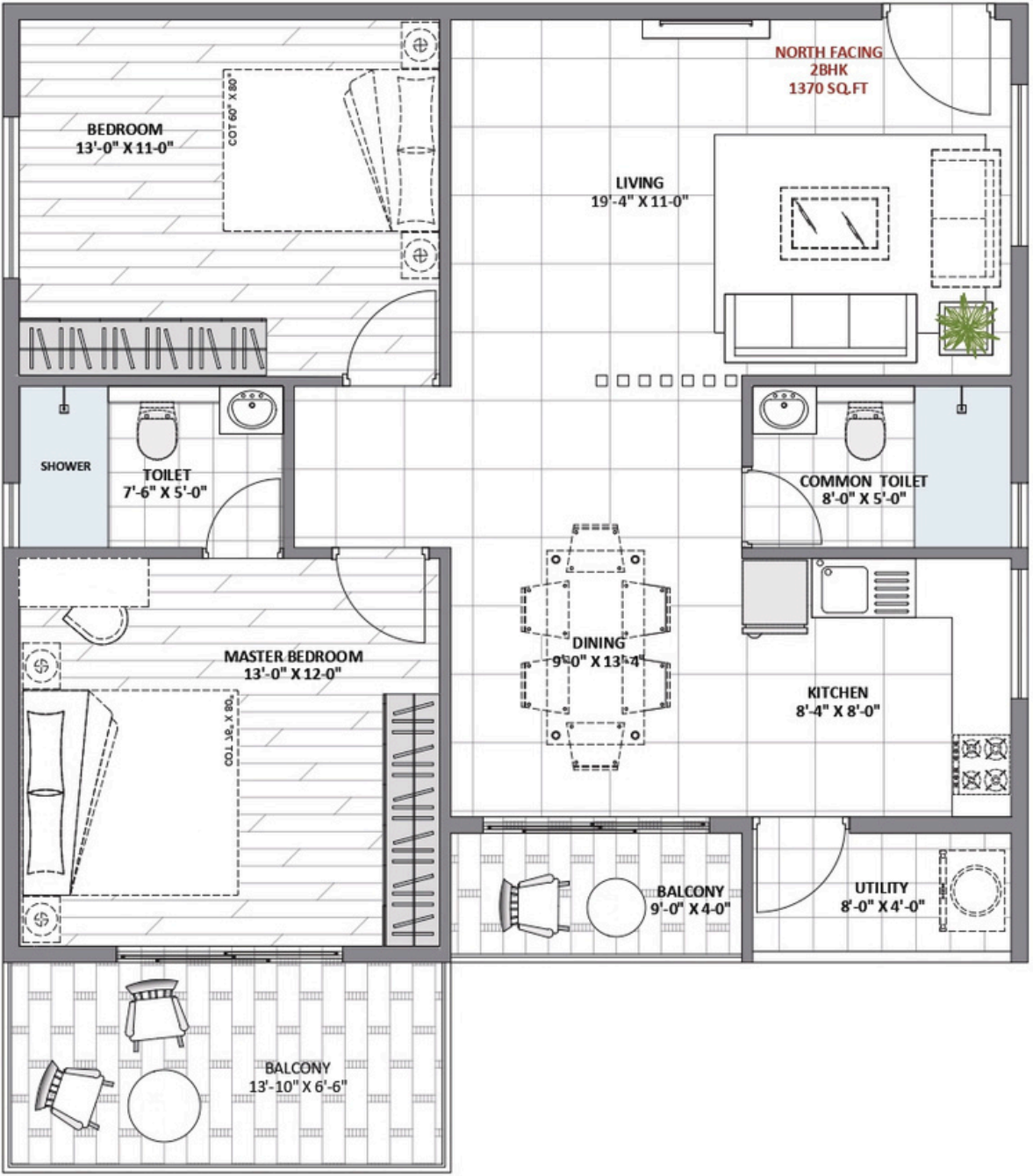


TYPE -3
WEST FACING (Typical Floor)
3 BHK
SA- 1930 SQ.FT

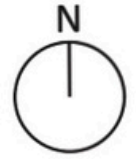
UNIT PLANS



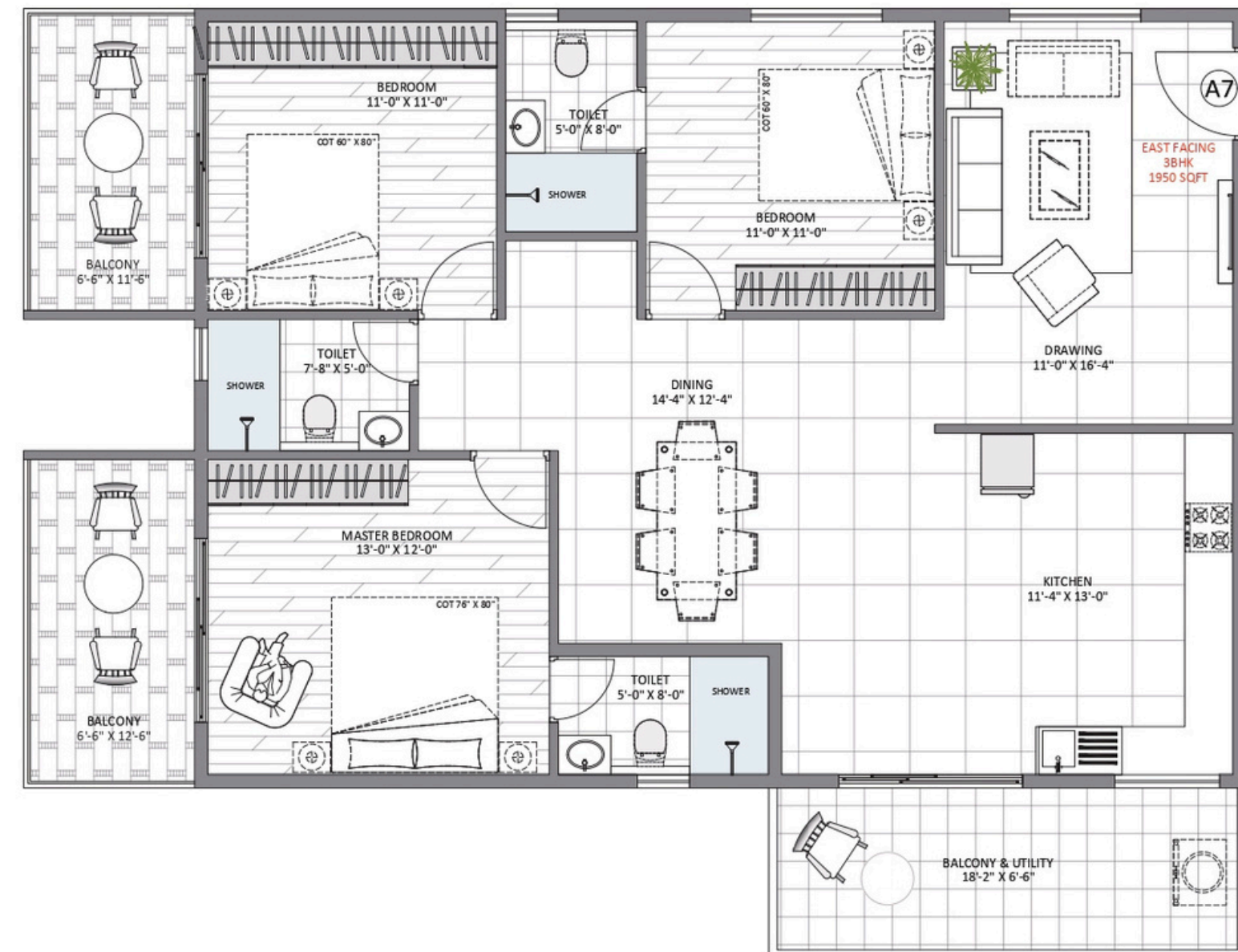
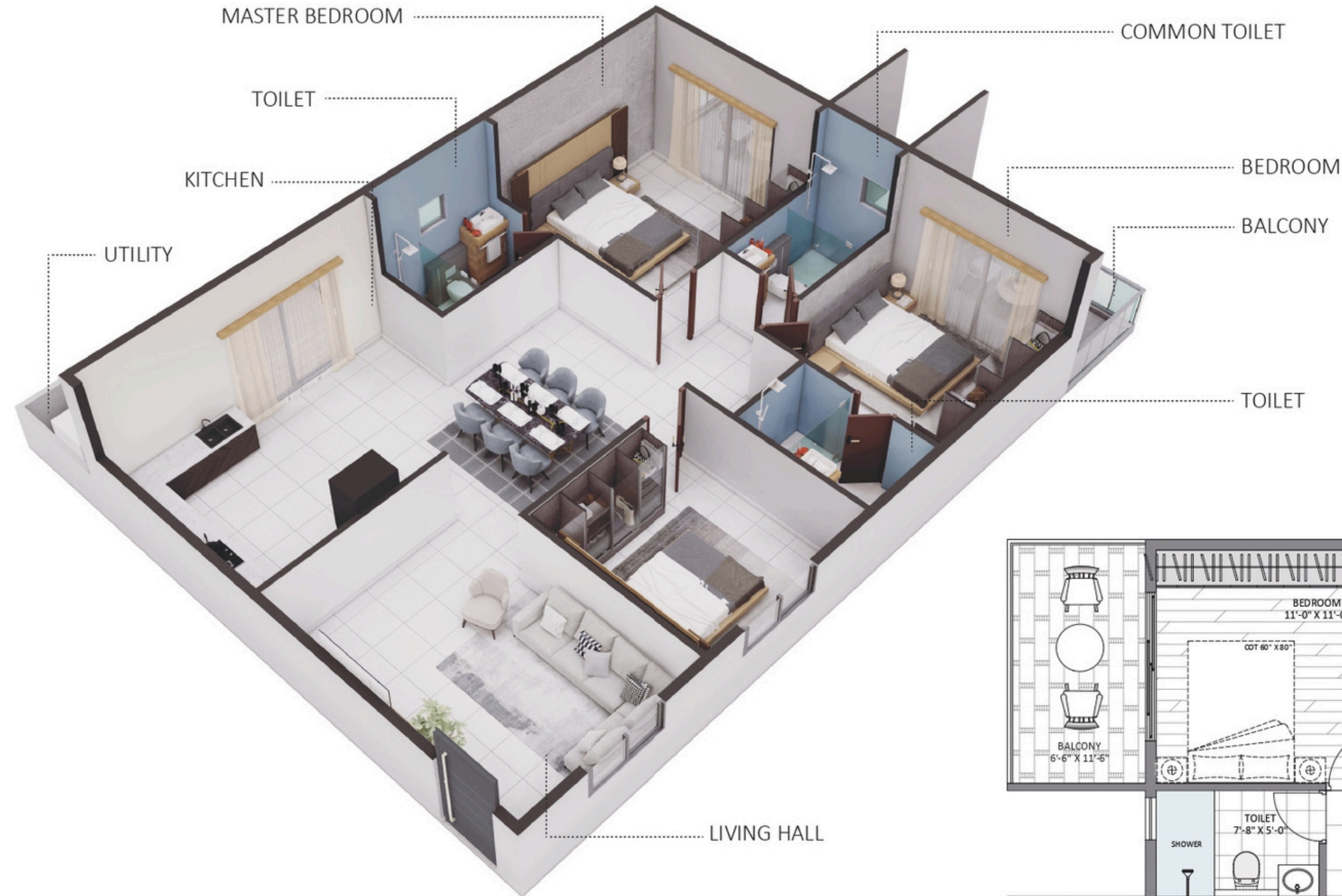
TYPE -4
NORTH FACING (Typical Floor)
2 BHK
SA- 1370 SQ.FT



UNIT PLANS

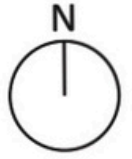


KEY PLAN

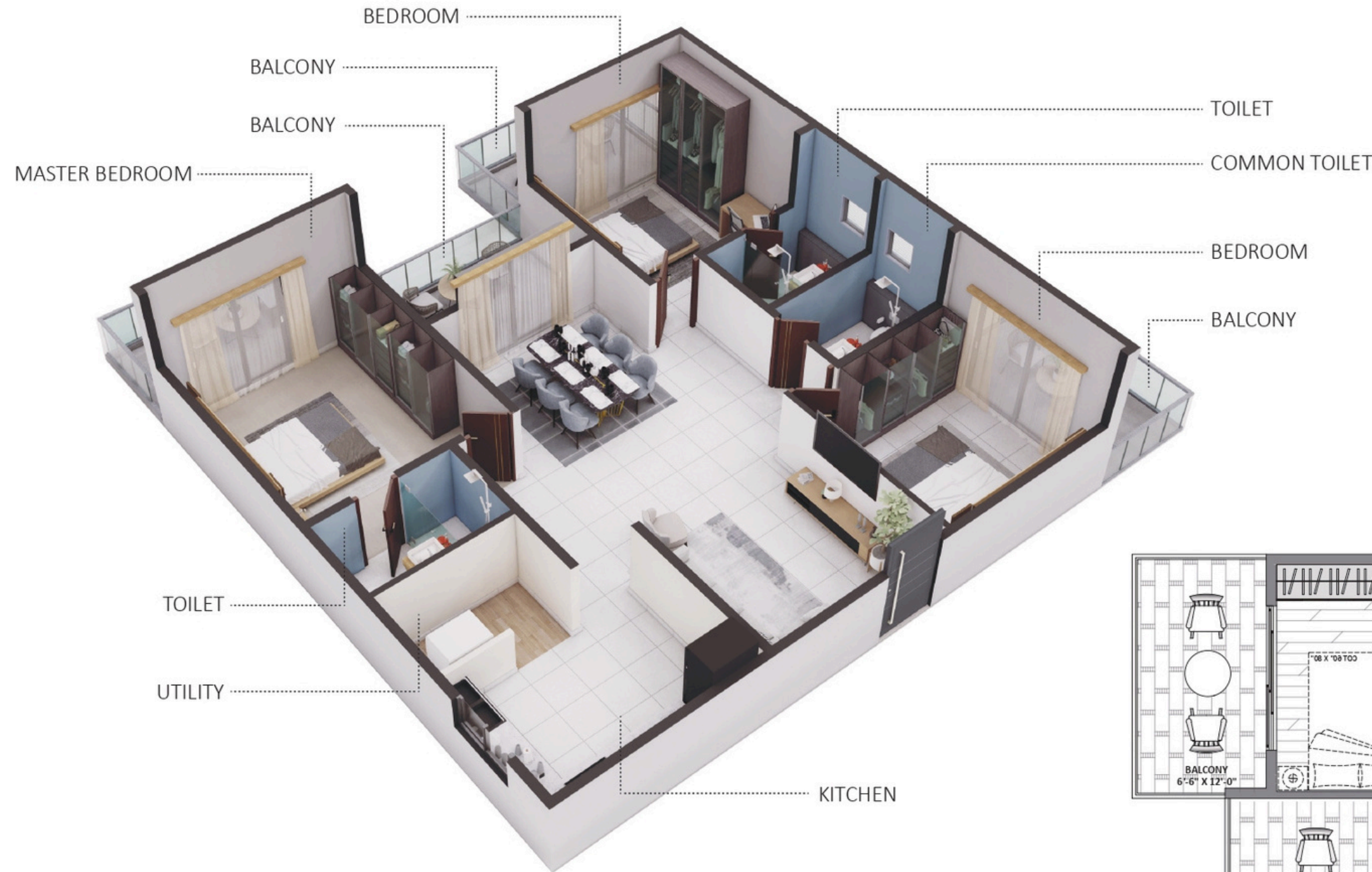


TYPE -5
EAST FACING (Typical Floor)
3 BHK
SA- 1950 SQ.FT

UNIT PLANS



KEY PLAN

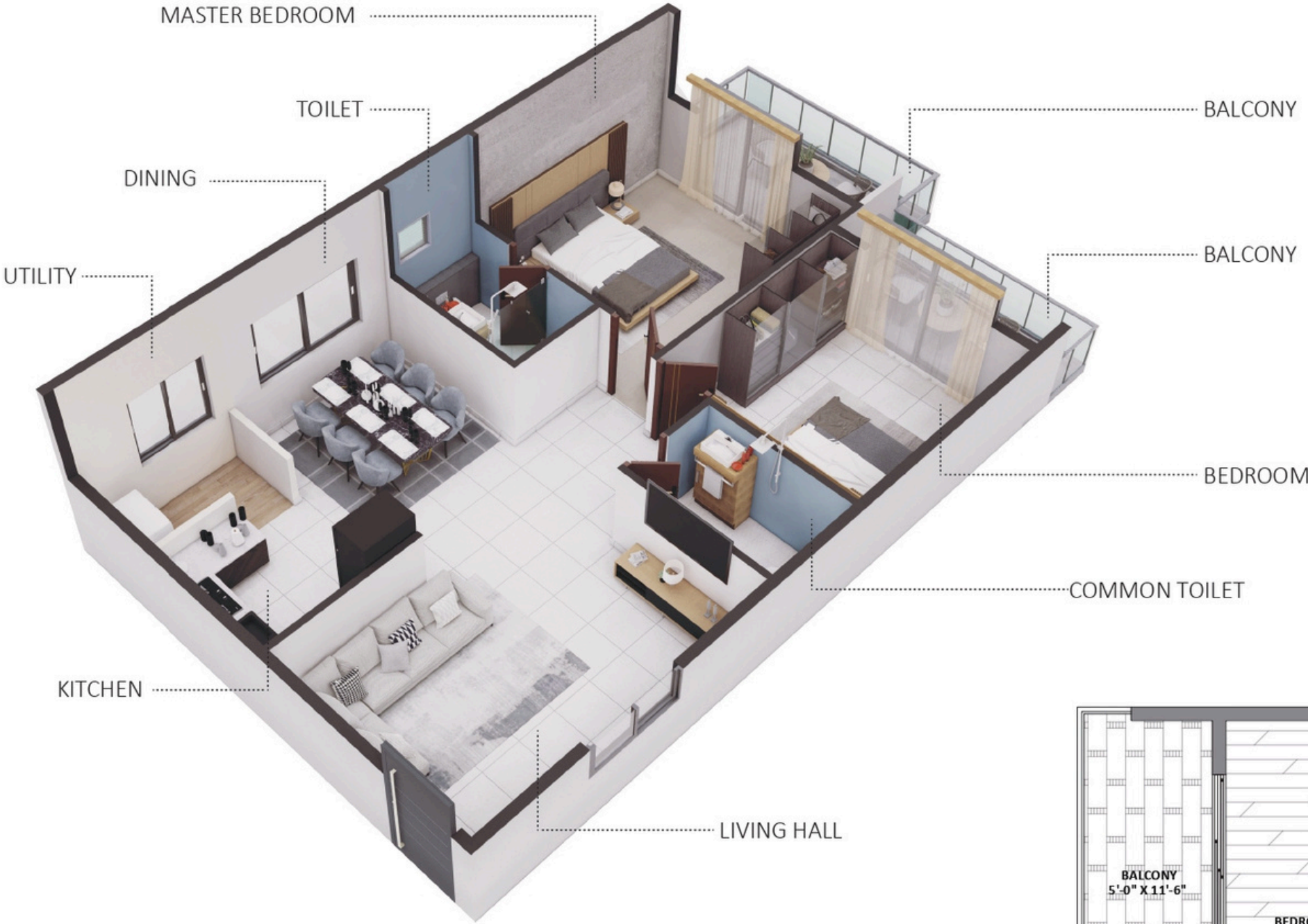


TYPE -7
EAST FACING (Typical Floor)

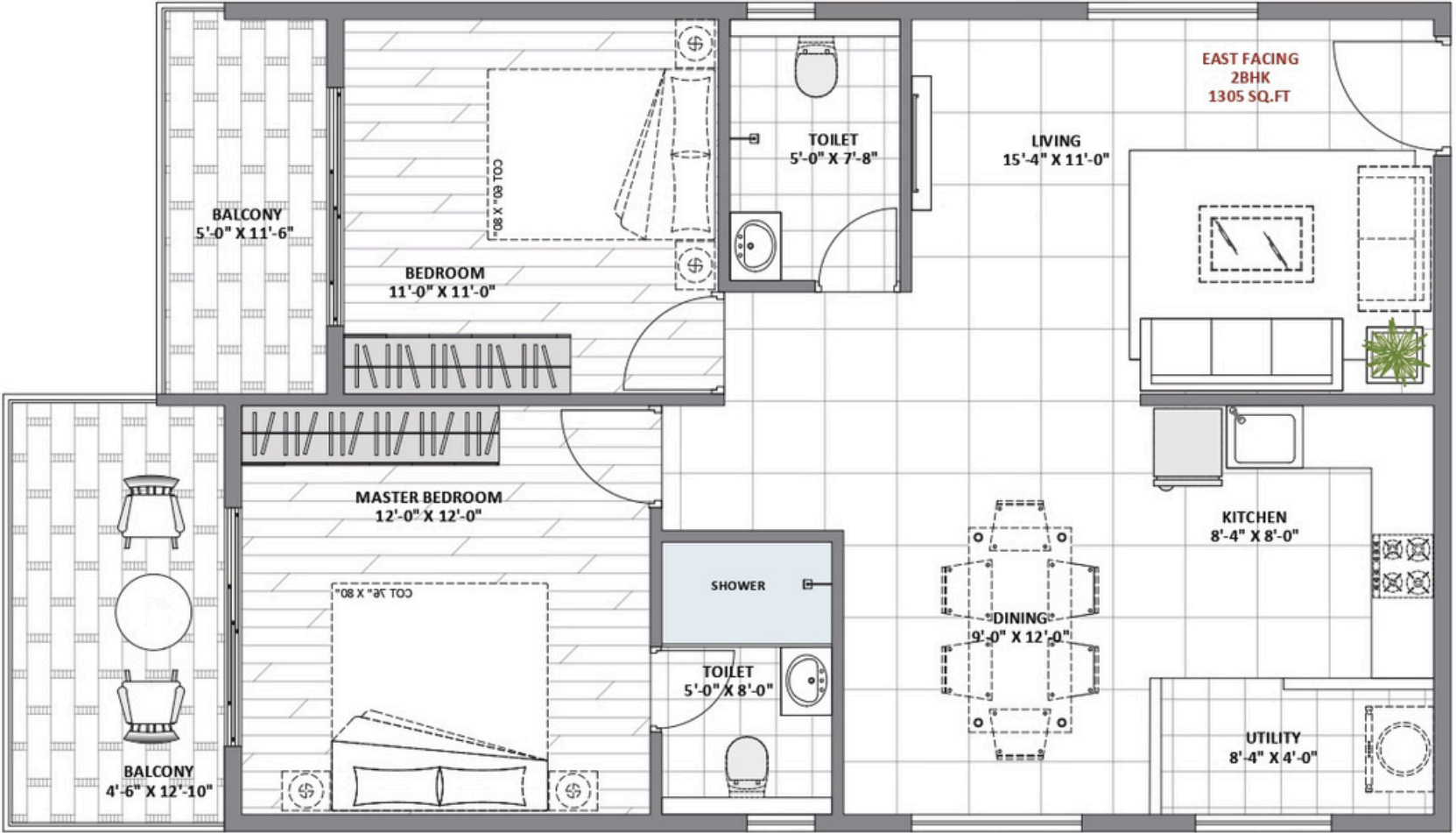
3 BHK

SA- 1900 SQ.FT

UNIT PLANS




TYPE -6
EAST FACING (Typical Floor)
2 BHK
SA- 1305 SQ.FT





Thank You

 +91-9505050885, +91-9603030390

 info@aikyathadevelopers.in

 www.Aikyathadevelopers.in